

AN OFFICE GARDEN WITH RHYTHM AND BEAUTY



Project Name: 'The Garden Goes to the Office'
Location: Milan, Italy
Size: 80 m2

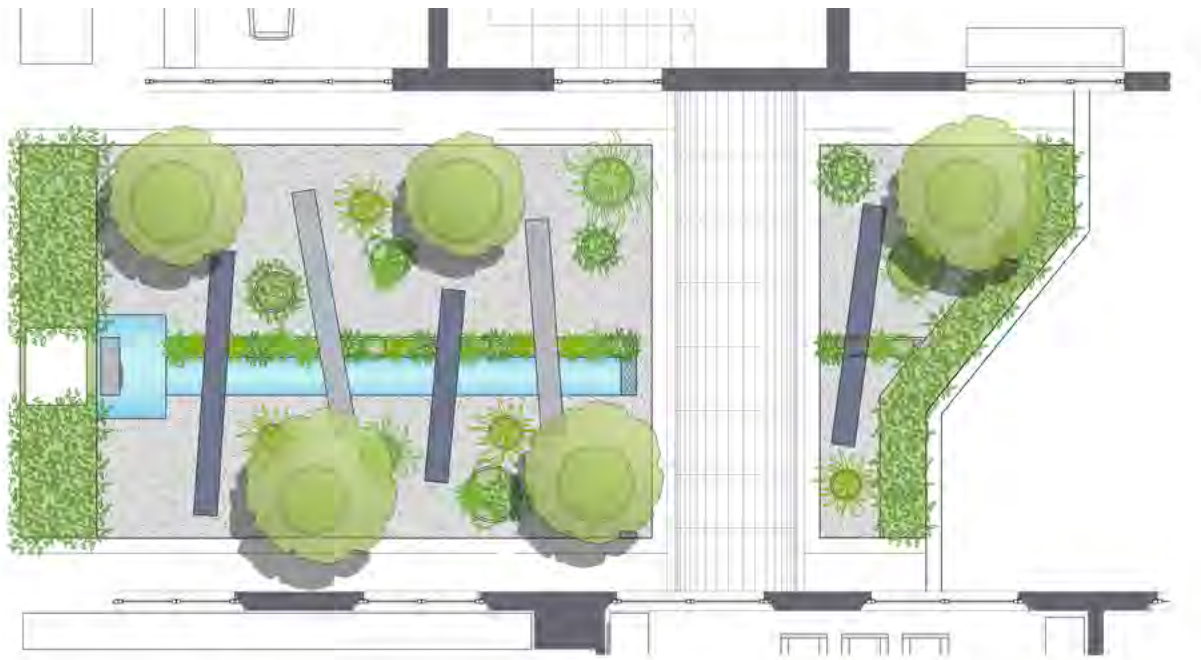
Design: Cristina Mazzucchelli Green Design
Leading Designer: Cristina Mazzucchelli
Photographer: Cristina Mazzucchelli

Design Concept

The place is the renewed headquarters of the VèGé Group, an historical Italian cooperative of retail chains. The sequence of offices, unclosed by large windows, displays the high efficiency and technology standards of contemporary architecture.

Limited spaces are dedicated to green, but in strategic positions: an air shaft, a small balcony and a roof garden of around 80 sqm, on the top of garages. On the latter space, the most visible, major efforts were focused to turn into reality the desire to create a place of representation and 'delight', and to make pleasant both the transit or stay in the many environments that look out on it.

Two are the main beneficiaries of this space for contemplation: the employers, working in the offices, and the suppliers, staying in the waiting room untill being received. The project took into account the preferential optic telescopes, inserting plants and volumes accompanying eyes to focal points, without hampering views from perimeter windows.



▲ ce with deliberate
eclectic informality



ce with deliberate
eclectic informality ►

To catch the eye is first and foremost a linear fountain, from which arises a canal that runs through the garden longitudinally; water, with its flow and gleaming movement, with its sound and the continuous changeability, intercepts and holds the attention. To expand the horizontal dimension, some metal rectangular boxes were placed, painted in elegant shades of gray, which act as bridges that surmount the central channel, deliberately distributed irregularly, in a similar way to the sticks of a Shangai game. A series of rings, emerging from the black ebony gravel, create raised beds that resemble green oases, full of interest all year long.

The view from the first floor offers a comprehensive picture, consisting of round bubbles of various sizes and heights, arranged in an apparently random order, which houses the vegetation. As a counterpoint to the free forms of the plants are the bold lines that cut the river, creating rhythm.

The habit of the plants, now upward, now rounded, further accentuates the movement, and allows to mitigate the view of the high perimeter walls.

▼ ce with deliberate
eclectic informality



▼ ce with deliberate
eclectic informality



Plant List

Cornus x rutgersensis Aurora
Edgeworthia chrysantha
Corylopsis spicata
Spirea thumbergii
Enkianthus campanulatus
Hydrangea paniculata Lime Light
Hydrangea paniculata Levana
Euonymus alatus Compactus
Phyllostachis bissettii
Pittosporum tobira nanum
Herdera helix Poetarum
Lonicera purpusii
Gardenia Kleim's hardy
Sarcococca ruscifolia
Iris japonica
Pachysandra terminalis
Epimedium x perralchicum
Carex Everest
Polistichum filis mas
Ophiopogon Mondo
Vinca minor Argenteovariegata

The botanical choices offer an uninterrupted succession of protagonist plants, often little known and with fragrant blooms. The white color, refined and relaxing, prevails. From the beginning of the spring, the early flowering Edgeworthiae and Corylopsis appear, followed by fluffy Spireas and precious Irises. Then the elegant trees of Cornus 'Aurora' take over: with their amazing candid bracts and their verticality, they draw the eye to the sky, beyond the limiting borders of the garden. From summer to late autumn, the opulent and charming Hydrangeas become changing jewels, beside the purple Euonymus and Enkianthus. Finally, in wintertime, the geometric and architectural forms of the garden become clear again, in a continuous cycle.

Working in an environment of harmony and beauty, reconnecting to nature, improves efficiency and performance: progress also passes through flowers.



ce with deliberate eclectic informality

