

AN ELEGANT RED TERRACE WITH VITALITY AND NATURALNESS



Project name: ELEGANT GEOMETRY
Location: Milan, Italy
Size: 30m²

Design: Cristina Mazzucchelli Green Design
Leading Designer: Cristina Mazzucchelli
Photographer: Cristina Mazzucchelli

Design Concept

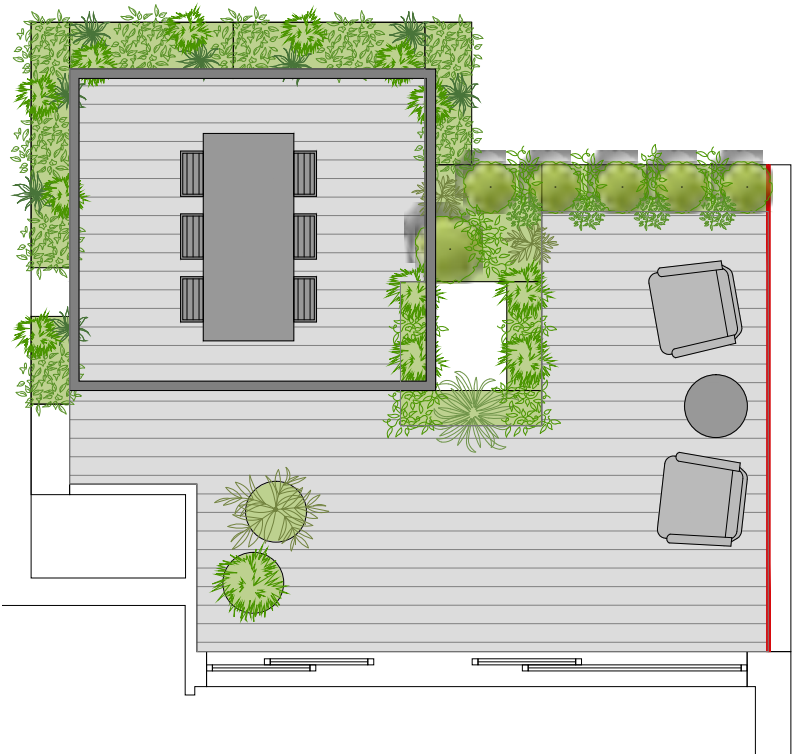
Hidden among the rooftops of an elegant district in the heart of Milan, this small but precious terrace represents the natural extension of the living room where the homeowners love to relax, reading books from their varied and inspiring library.

A large window, separating the interiors from the outside, keeps the two environments in visual communication, so that no discontinuity is perceived: the feeling is of being immersed in greenery even while inside the apartment.

In this scenario, where lines are dominant, giving rise to a clear design, plants are not only decorative elements, but also means to create a visual background.

In fact, the eyesore present on the surrounding house roofs are masked along the perimeter by a row of evergreen, such as pyramidal badgers, or deciduous plants, like hornbeams, pruned like parallelepiped.

Two preexisting critical issues in the terrace were transformed from a limit into an opportunity: an ugly and looming border wall and a tall chimney, right in the middle.



▲ ce with deliberate
eclectic informality



ce with deliberate
eclectic informality ►

The separating wall from the neighbor was entirely covered with a perforated and painted aluminum panel, which characterizes in an unusual way the whole context. Indeed, this partition not only conceals the wall, but also represents an elegant backdrop, on which always different shows are staged.

Its lacquered red color, with a strong contemporary imprint, is an eye catcher: it generates strong chromatic contrasts with the green of the foliage and the changing tones of the blooms, but it also constitutes an effective background for artworks or sculptures, great passion of the owners, that embellish and enliven the setting. Even the shadows that are projected on its surface create variable pictures in motion at the different times of the day.

The chimney, on the other hand, was concealed by a sequence of metal planters, custom made, which wrap it on its four sides: climbing plants, such as jasmine, were useful for creating a green column, while bold plants, like an old *Edgeworthia caryanthea*, provides an architectural focal point through its elegant sinuosity, displacing the attention from the chimney. In addition, this unusual

▼ ce with deliberate
eclectic informality



plant gives its best in the winter season, when it blows up like a firework with a golden fragrant flowering.

The masking planters also constitute separation element that divide the terrace in two distinct areas: one housing some comfortable contemporary-style seats, the other a large table, to eat outside. Covered by a glass plate, its reflections bring the sky into the outdoor room, creating interesting light effects.

To surmount the table, a pergola with strong lines but without a covering was created on purpose, whose role is not to shade, since unnecessary, due to the terrace orientation, but to circumscribe and three-dimensionally define the space; climbing plants with light and transparent leaves, such as *Akebia quinata*, refine the metal structure, in a happy combination of living and non-living material.

To create a sense of continuity and visual coherence, gray WPC wooden-like planks were used not only for paving, but also the cover planters, that follow one another on three sides.

▼ ce with deliberate
eclectic informality



Plant list

Carpinus betulus Nord
Phyllirea angustifolia
Euphorbia x martinii Ascot Rainbow
Vinca minor Bowls Variety
Sarcococca ruscifolia
Lagestroemia Muskogee
Mahonia confusa Nari Hiri
Sarcococca ruscifolia
Carex oshim. Evergold
Spirea arguta
Agapanthus umbellatus Albus
Trachelospermum jasminoides
Edgeworthia corymbosa
Geranium x cantabrigiense Biokovo
Pittosporum heterophyllum Albovariegatum
Hydrangea paniculata Lime Light
Akebia quinata
Clematis armandii Apple Blossom
Camelia japonica
Loropetalum chinense Black Pearl
Pachisandra terminalis
Pittosporum tobira nanum
Pachisandra terminalis



Geometries are a hallmark of this terrace: the linear features of the pergola, leading the eye into the distance, the squared perimeter hedges, softened by the free lines of hydrangeas with rich white flowers, and spireas with minute and light leaves. But also the furnishings, the decorative theme of the border panel, the rigorous layout of the planters: they all contribute to generate order, counterbalanced by the exuberance of the vegetation, in which clear colors and bright flowers predominate, to give lightness.

The intertwining of the foliage creates a network of different textures, which attracts and invites the eyes to explore every corner. Two pastel colored hand-made vases are filled with plants that create focal points; however, they also act as a frame, through chromatic assonances, to a further decorative element: an oriental-inspired painting, from the Japanese artist Kazuhito Nagasawa.

The materiality of his work, hanging on a wall, is in harmony and highlights the most distinctive elements of this terrace: vitality and rigor, naturalness and elegance.

SMALL GARDENS



ce with deliberate eclectic informality

