



AN ELEGANT, CONTEMPORARY STYLE GARDEN



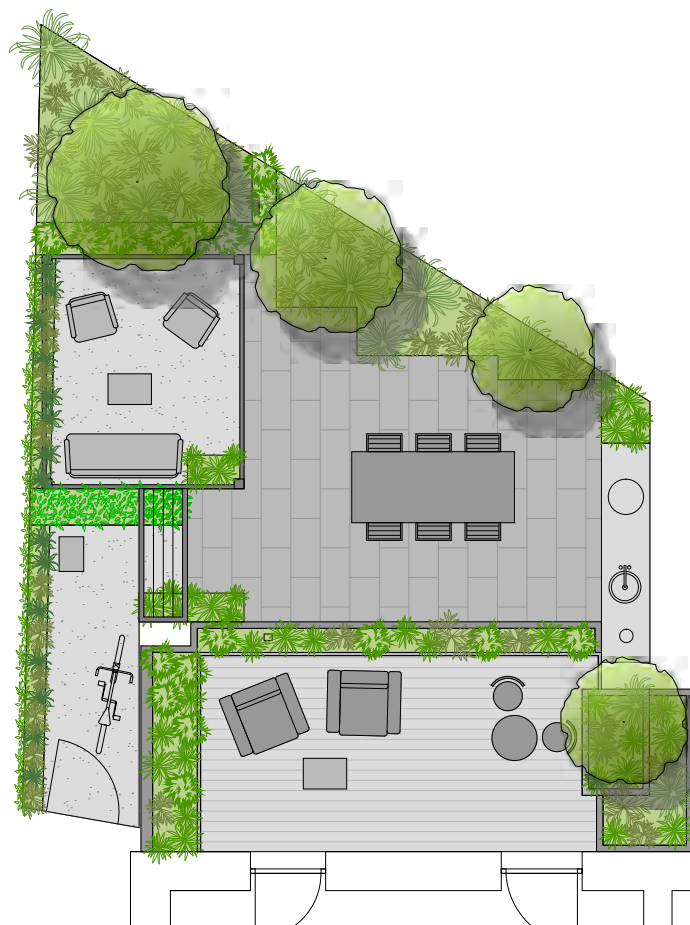
Project Name: 'Tamed Jungle'
Location: Milan, Italy
Size: 50m²

Design Company: Cristina Mazzucchelli Green Design
Leading Designer: Cristina Mazzucchelli
Photographer: Cristina Mazzucchelli

Design Concept

Città Studi, East of Milan; in a cottage district of the thirties, with backgardens surrounded by a delimiting gate, it arises a house bought few years ago by a lawyer, who completely renovated it. The result is an elegant, contemporary style house, with two plus. A small terrace, at the first floor, and a garden at ground floor, designed as an intimate space, a ‘gentle’ urban jungle, with a british backtaste, dedicated to relax and conviviality. Visible beyond the large windows, the garden catches the eye as soon as you cross the home entrance, creating a lush background.

Multiple were the client requests, to be synthesized in a 50 square meters, as a natural interior extension: a dining area, with a BBQ and a sink, a relax area surrounded by plants, finally a bicycle parking place. Some limiting factors to face were the irregular shape of the lot and the presence of an acute angle, a passage for residents along the perimeter and the impossibility to dig the ground in some points.



Plan



ce with deliberate
eclectic informality



ce with deliberate
eclectic informality

The use of different materials allowed to define functionally multiple small 'rooms', visually linked one to the other: for example, the natural cream colored stone in the dining area, where stands a large table closed to a BBQ and a sink of the same material; instead, the gravel in the living and in the parking area, accessible through a small arbor.

The plant choice arises from the North garden orientation, affecting white flowering, shade lover plants; this color that not only enhances the minimalist elegance of the place, but makes it bright in the evening and at night. Privacy, with respect to the perimetric passage, is guaranteed by evergreen climbers, associated with ferns and Hydrangeas. Acer palmatum 'dissectum' and underwood plants soften the sharp angle, giving rise to an intimate and secluded setting.

Furthermore, a cubic metal structure, delimiting a three-dimensional space, defines the boundaries of the sitting room, with wooden furniture and a bamboo

▼ ce with deliberate
eclectic informality



hedge. The color choices give a sense of continuity: in addition to the natural and neutral tones, the anthracite colour links internal elements of the house with both the pergolas and the planters, including those on the first floor terrace.

The latter, thanks to the presence of the sun, host an evergreen Mediterranean vegetation that surrounds a small and elegant space, paved with teak and decorated with minimalist and sophisticated furnishings. The favorable environment surrounding the house, as a small urban green oasis, is exploited by borrowing the trees scattered in the neighboring houses, which become both a screen for privacy and an artifice to generate visual depth.

The project involved also the external facade: in correspondence of each window a planter with drooping plants has been placed, which originate an unusual green curtain of this lush courtyard garden in Milan.

▼ ce with deliberate
eclectic informality



Plant list

Garden	Terrace
Polystichum polyblepharum	Molinia caerulea Heidebraut
Gardenia jasminoides radicans	Stipa tenuissima
Sarcococca ruscifolia	Rosmarinus officinalis prostratus
Anemone 'Honorine Jobert'	Vinca minor alba
Carex Everest	Ceratostigma plumbaginoides
Euphorbia amygdaloides 'Purpurea'	Agapanthus Bluestorm
Epimedium 'Orange Konigin'	Deutzia gracilis Nikko
Clematis armandii 'Apple Blossom'	Chasmanthium latifolium
Heuchera 'Palace Purple'	Stipa tenuissima
Equisetum hyemale	Euphorbia amygdaloides Purpurea
Wisteria longissima Alba	Miscanthus 'Morning Light'
Amelanchier ballerina	Pittosforo heterophyllum
Lagestroemia indica 'Muskogee'	Nandina domestica
Acer jap. dissectum viridis	Malus Evereste
Hibanobambusa tranquillans 'Shiroshima'	Erysium variegatum
Hydrangea quercifolia 'Pee Wee'	
Hydrangea panuculata 'Lime Light'	
Phyllostachis aurea	
Pittosporum nanum	
Trachelospermum jasminoides	
Hedera helix hibernica	



SMALL GARDENS

ce with deliberate
eclectic informality ▶

